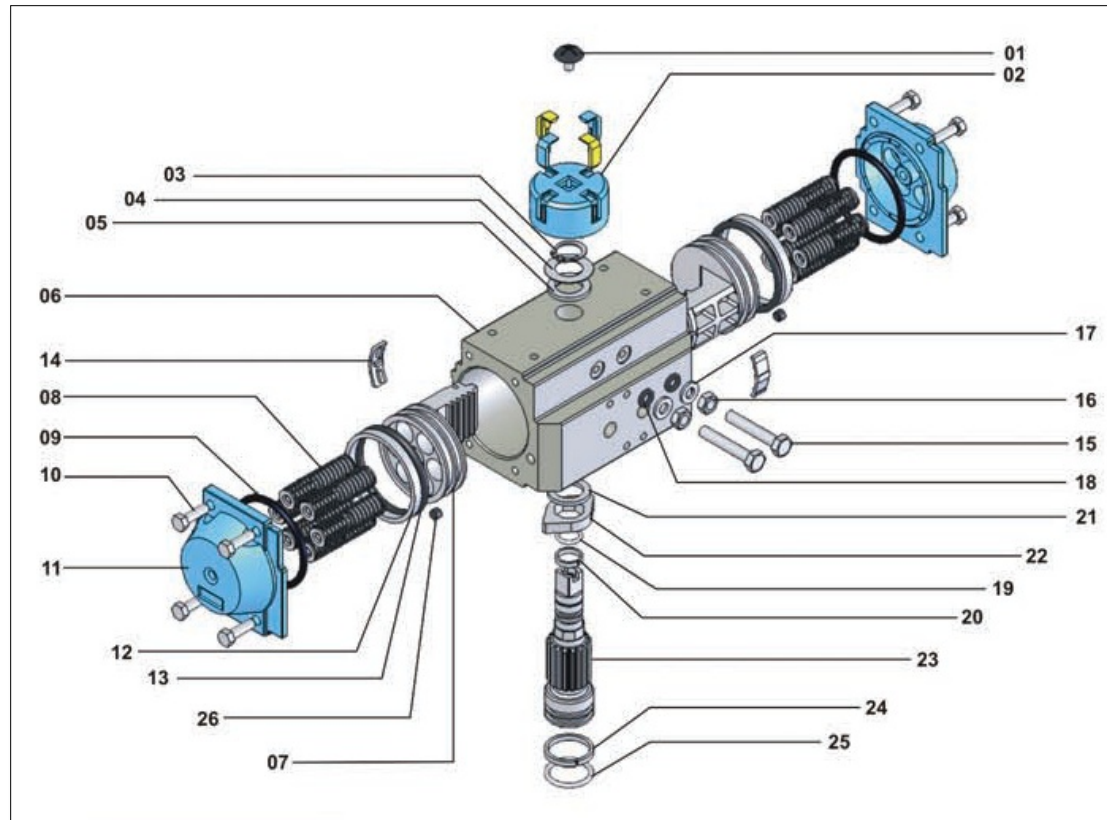




**T Series Pneumatic
Actuator's Introduction**

Structure of T Series Pneumatic Actuator



Product's Information



- ◆ Rack & Pinion type
- ◆ Model **032- 400**
- ◆ The largest cylinder diameter is **400mm / 7000Nm**

Cylinders



- ◆ Aluminum alloy stretch formed
- ◆ The center hole machined by CNC (deviation **0.03mm**)
- ◆ The surface finish after machined is **Ra1.0um**
- ◆ Hardness is **80HB**

Cylinder Post Treatment

- ◆ Inner surface finish is **Ra0.6um-0.7um** after vibration grinding
- ◆ Cylinder surface hardness after hard anodized is **≥360HB**
- ◆ The thickness of oxidation film:
Light color: **25um**
Dark color: **45um**



Actuator Spring

- ◆ The spring's material is imported piano wire
- ◆ Pre-pressed spring insured the safer assembly / disassembly
- ◆ Surface finished by cathachresis, corrosion proof
- ◆ The life cycle decay less than **8%** after **1,000,000** times



Die Casting Piston



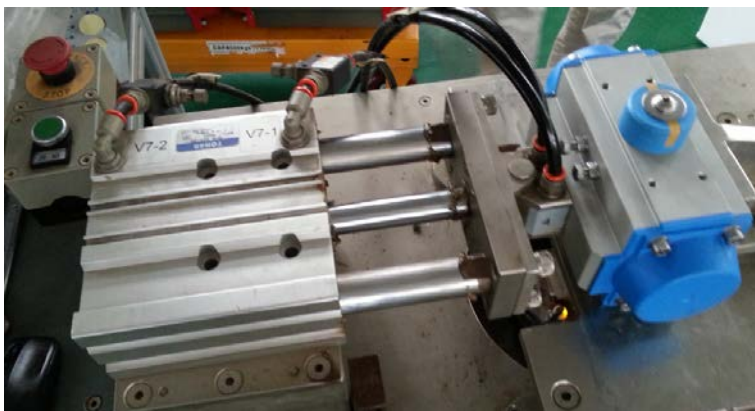
- ◆ New design pattern, tooth surface finish **0.02mm**
- ◆ Tooth bottom radians enhance it's strength
- ◆ Rib beside the tooth also increase it's strength
- ◆ Surface finished by catachresis, corrosion proof
- ◆ One clamping ensured the seal surface and supporting surface concentricity

Output Shaft



- ◆ Material is # 45 steel
- ◆ Cold stamping bottom hole, form tolerance is smaller than **0.06mm**

Pre-shipment Test



- ◆ Minimum working pressure test
- ◆ Leakage test
- ◆ **100%** test
- ◆ Single series number

Our Quality Standard

- ◆ Double acting cylinder
For On & Off valve > **2,000,000 times**
For control valve > **1,000,000 times**
- ◆ Spring life cycle > **1,000,000 times**
- ◆ Minimum acting pressure $\leq 0.2\text{Bar}$

Catalogue download:

http://www.respongroup.com/download/T_series_pneumatic_actuator_catalogue_X.pdf



RESPON
CONCENTRATE ON VALVE CONTROLS




www.respongroup.com

RESPON
YOUR VALVE CONTROL'S PARTNER

Pamela Pan
GM

Mobile: 1381 202 5434
Tel: +86 510 85860615
Fax: +86 510 84088725
No.37,Liangxi Rd.,Wuxi,China



pamela.pan@respongroup.com

CONTACT US FOR MORE INFORMATION

 [respon_flow.control](https://www.skype.com/partner/respon_flow.control)

Add: No.37, Liangxi Rd., Wuxi, China
Email: pamela.pan@respongroup.com